



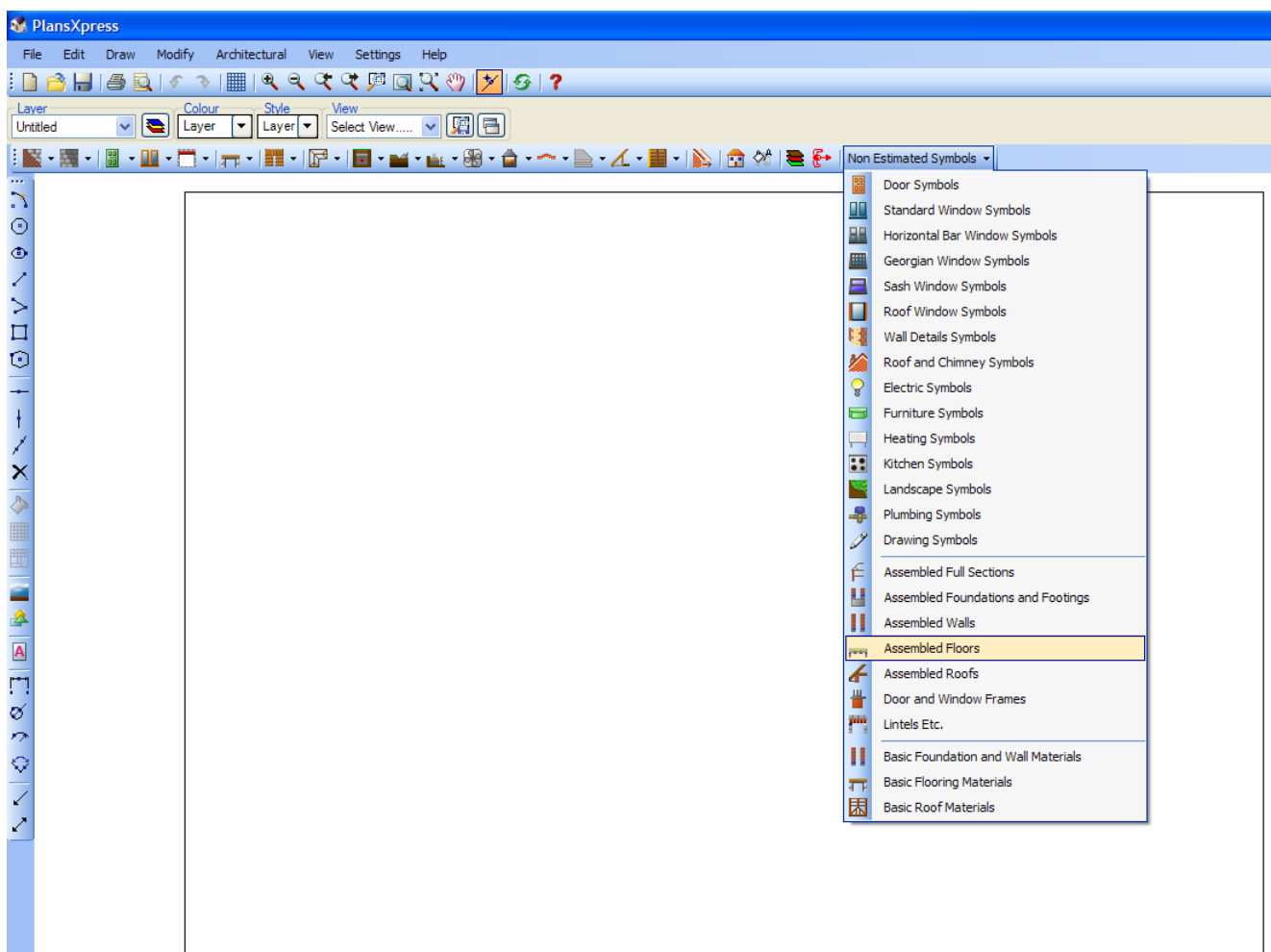
# JIM'S PLANSXPRESS® TOP TIP

June 2010

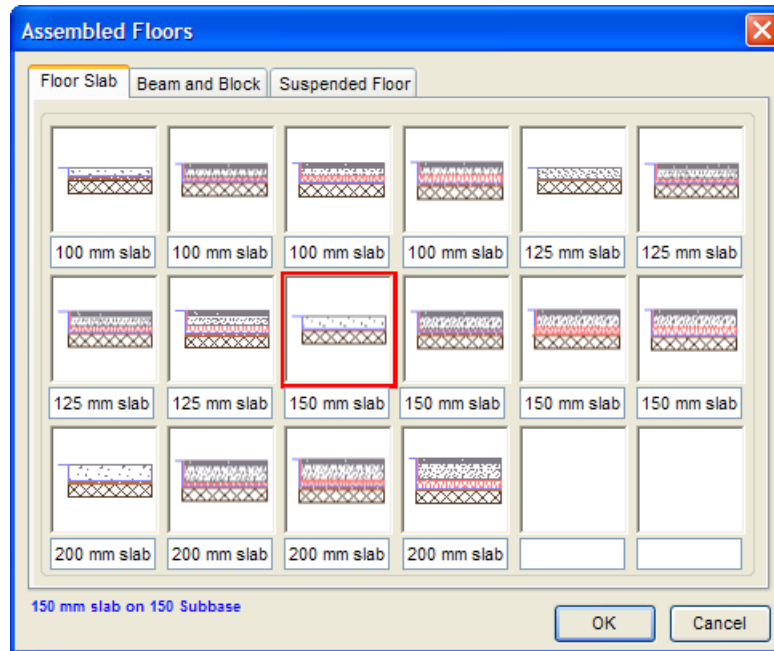
## Modify Non-Estimated Symbols and save the modified symbols to the Library.

PlansXpress® v.2 has many additional features over version 1. If you haven't already upgraded to version 2 instructions on how to do so can be found at [www.hbxi.co.uk/plansxpress/upgrade.htm](http://www.hbxi.co.uk/plansxpress/upgrade.htm) (A valid Support and Updates subscription is required).

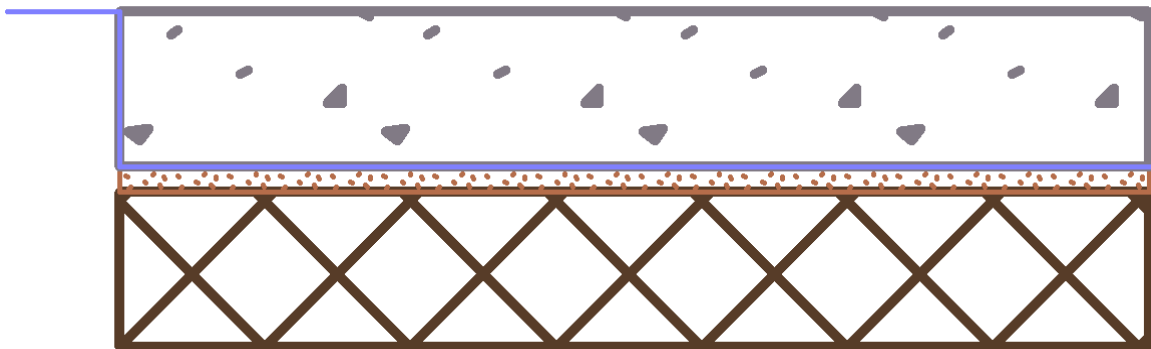
This months PlansXpress® Top Tip shows you how you can take an existing Non-Estimated Symbol, modify it, and save it for future use. We are also going to add the symbol to the library of Non-Estimated Symbols so you can easily add it to your plans.



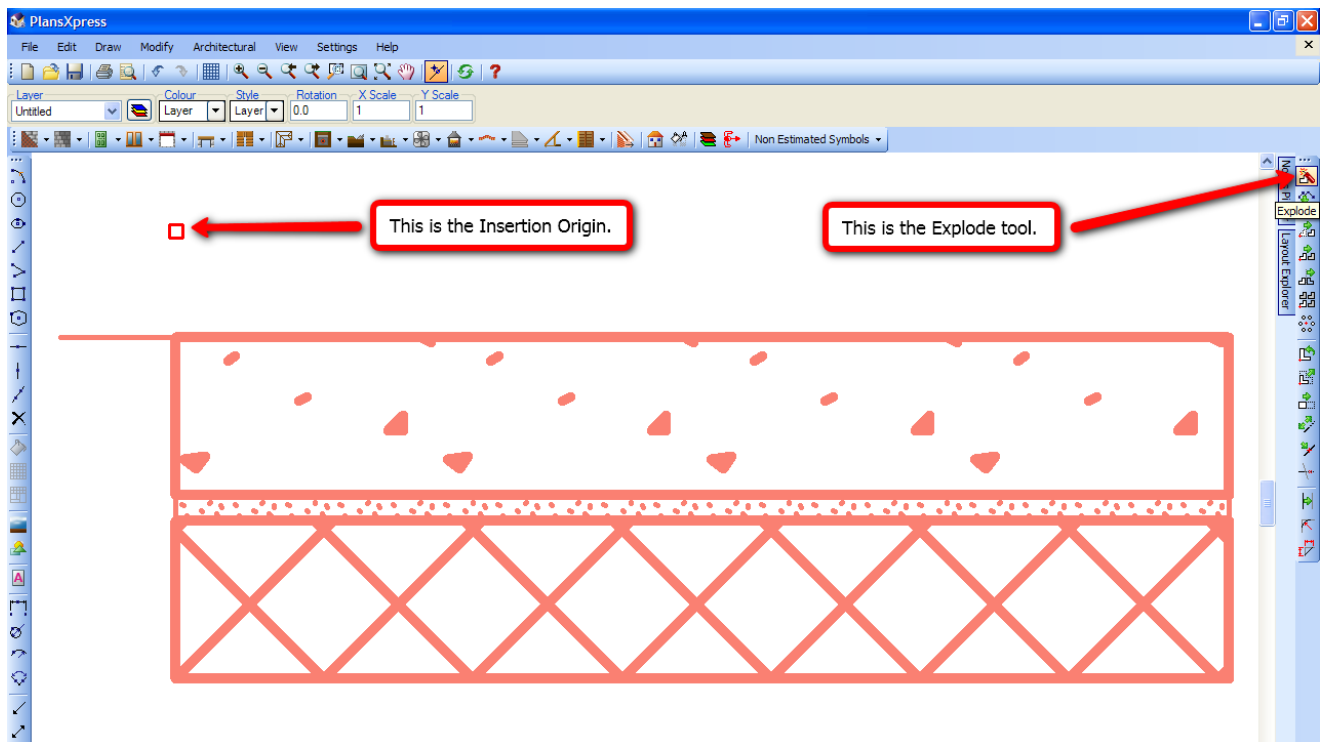
For this example we are going to modify a slab symbol and then add the modified symbol back into the library of Non-Estimated Symbols. The Floor Slab symbols can be found under the 'Assembled Floors' section in the 'Non-Estimated Symbols' dropdown.



We are going to use the 150 mm slab on 150 Subbase symbol. Select the symbol from the menu and click **OK**. Click on the plan once to place the symbol and a second time to set the rotation (hold the shift button while doing this to make sure the symbol is placed horizontally).

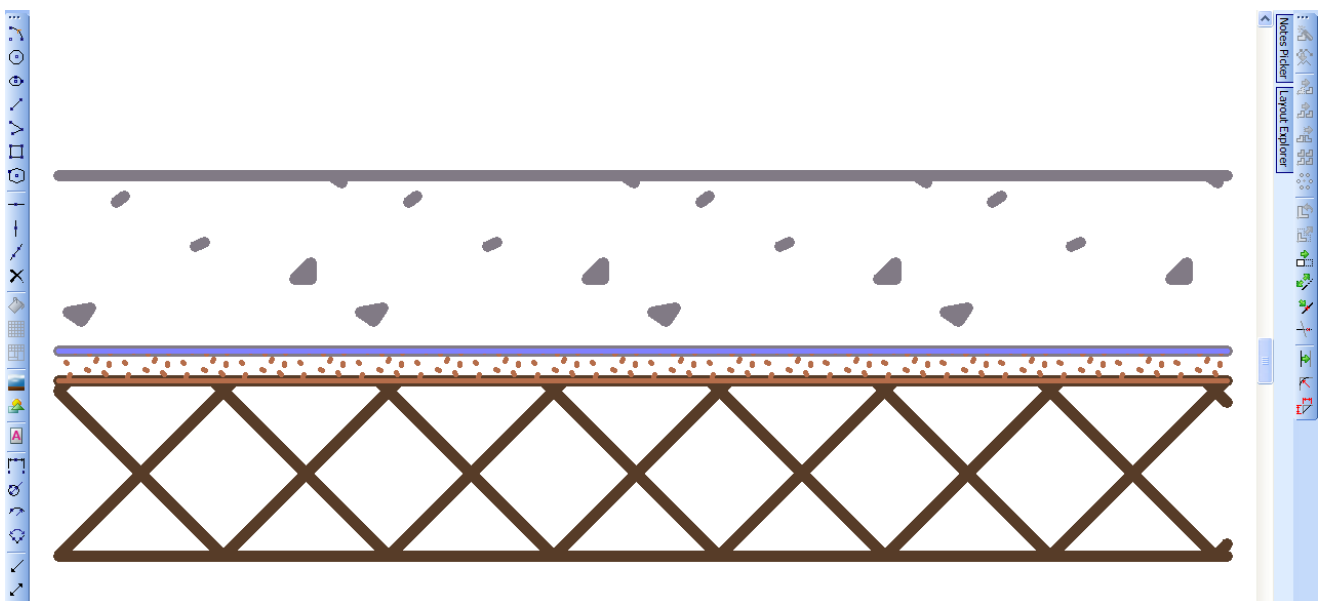


Every symbol is just a PlansXpress® file with different components grouped together and an **Insertion Origin** set that lets PlansXpress® know which point on the symbol will be placed on the end of your mouse when placing it.



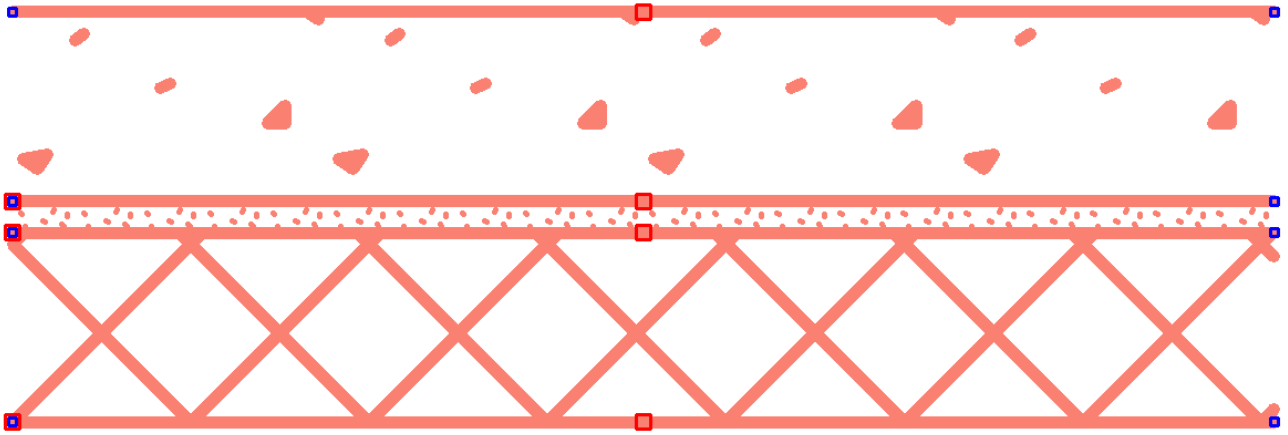
The symbol is just made up of different lines and hatched patterns grouped together, to edit the symbol we first need to select the symbol and use the **Explode** tool. With the Symbol selected click the **Explode** button.

If you click on the symbol again you will notice it no longer selects everything, just the line or area of hatching that you clicked on unless it is in further blocks of components. You may find that you need to explode further components multiple times to break the polylines and hatching apart.

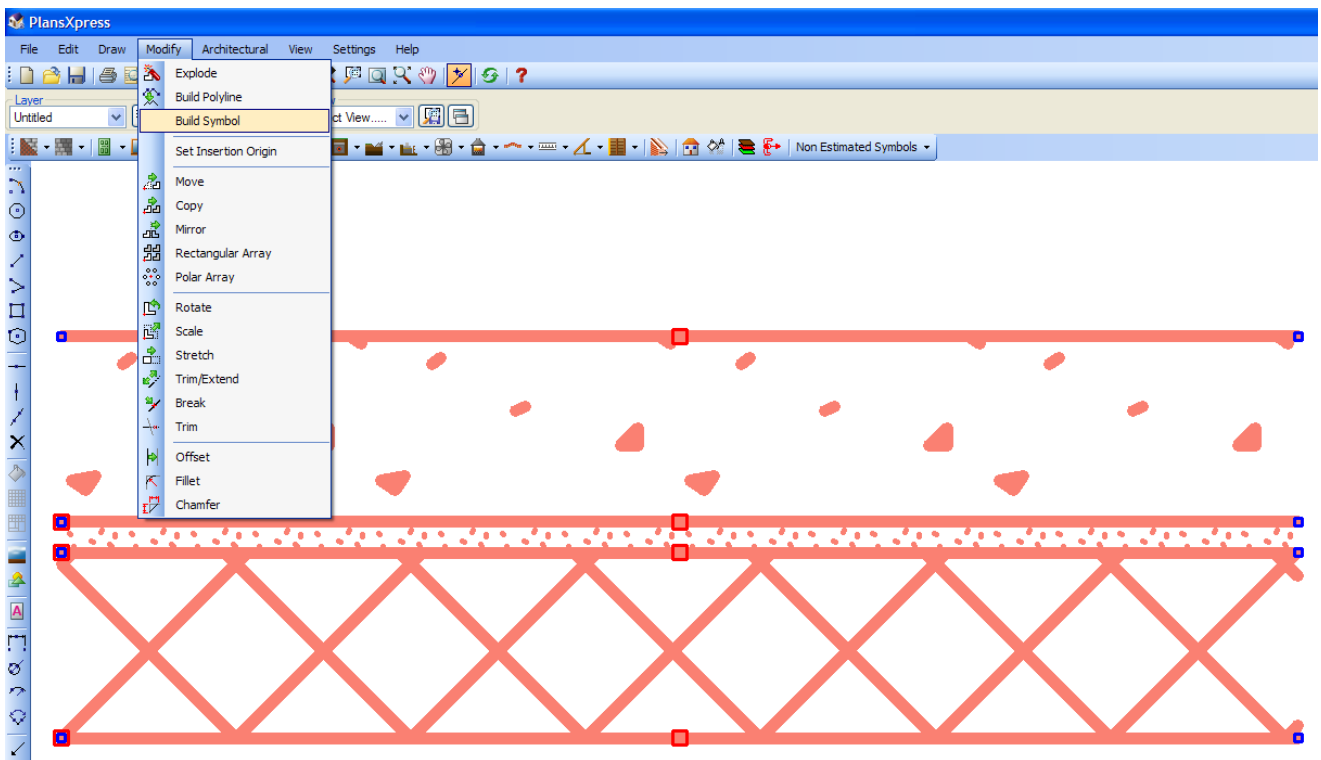


Above is an example of something we might want to do. The symbol and its components have been exploded and part of the DPM that the lines at the side of the slab have been deleted.

Once we have finished making the changes to the symbol we need to group the items back together. To do this first select all of the items, either by clicking and dragging the mouse around them or by clicking **Edit** -> **Select All**. The selected items should look like they do below.

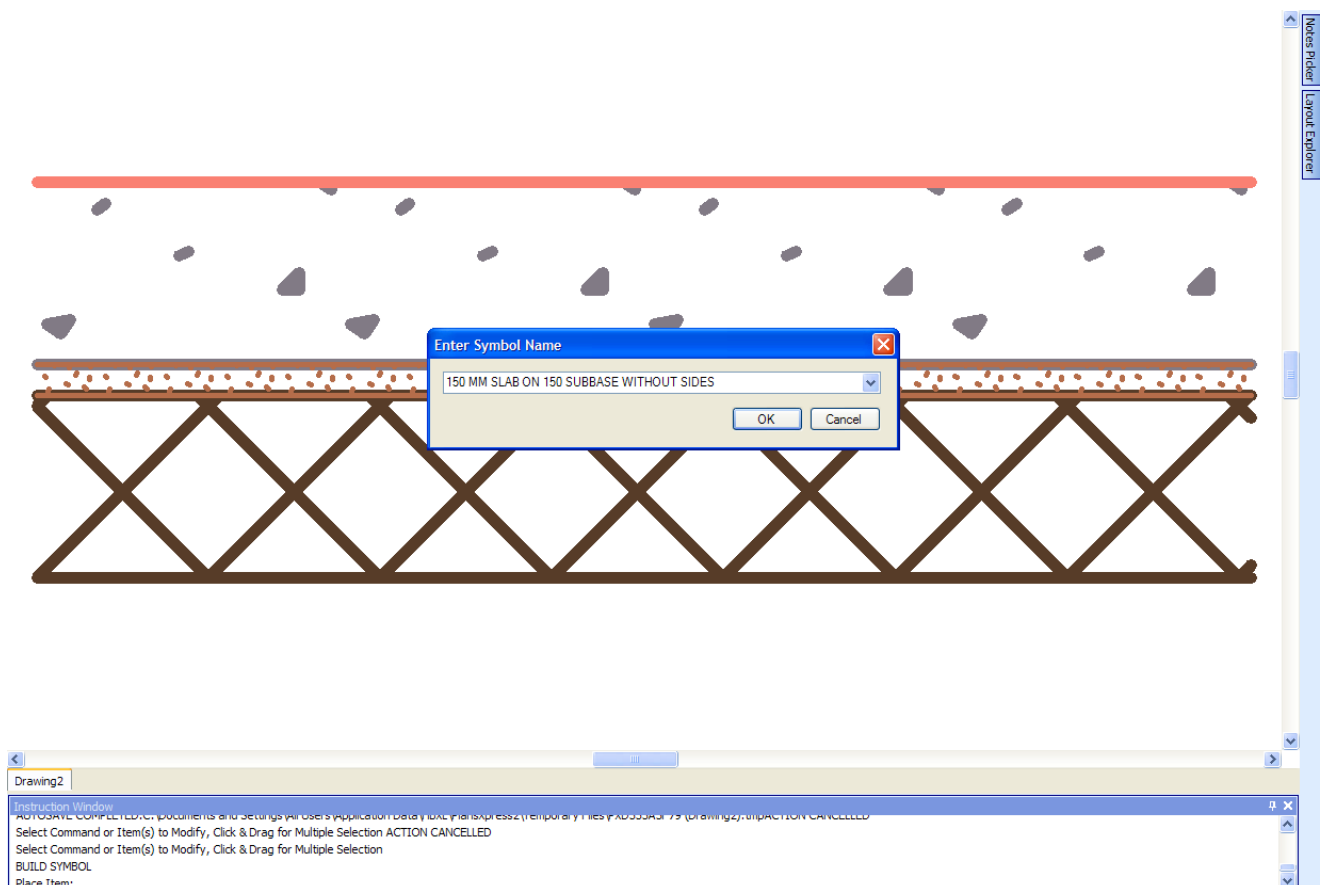


Now we need to click **Modify > Build Symbol**.





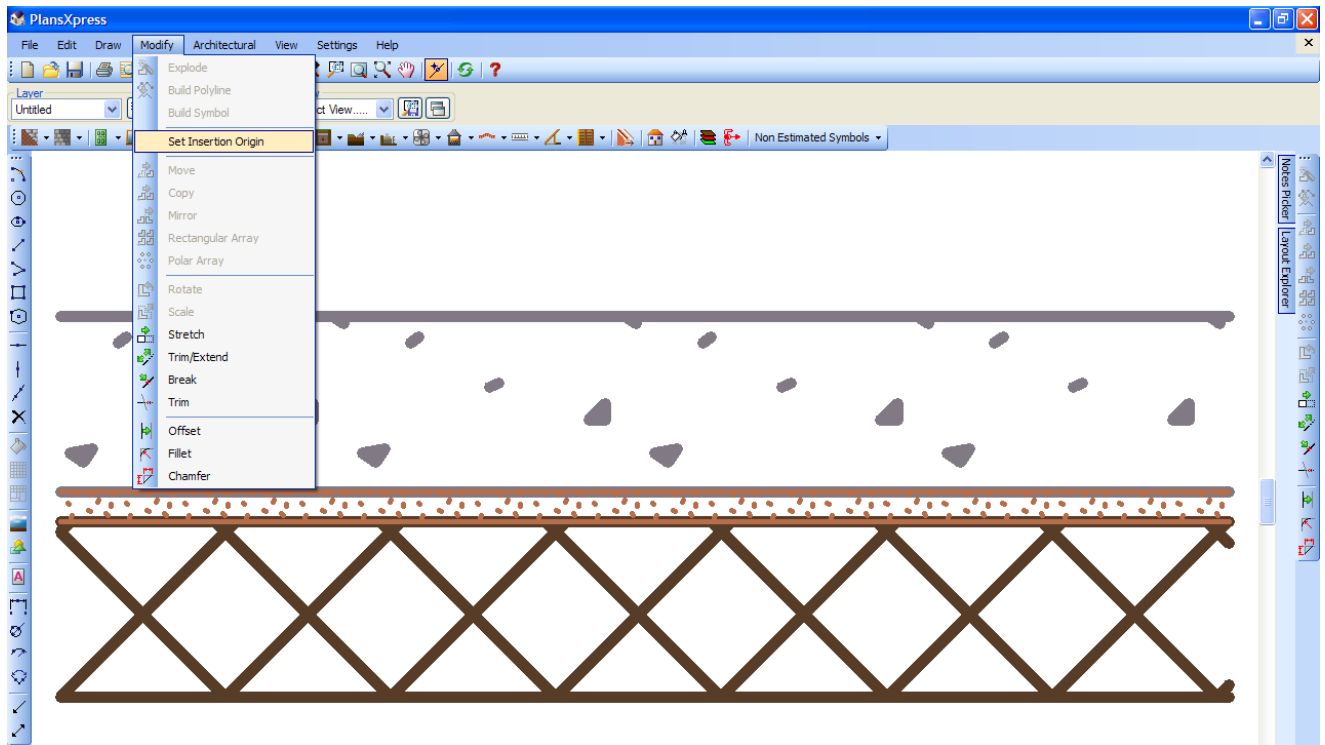
After clicking on **Build Symbol** place the item by clicking on the top left corner. The **Instruction Window** will then ask us to **Enter Symbol Name**, we are going to call it **150 MM SLAB ON 150 SUBBASE WITHOUT SIDES**.



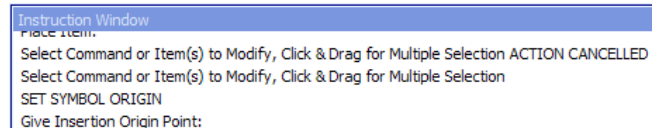
Click **OK**.

To ensure our symbol will be displayed properly it is a good idea to select the symbol and click **Edit > Copy**. Open a fresh blank A3 1:50 plan and paste the symbol into the new plan. This will allow you to check that it looks correct and is grouped together well for copying or moving around a new drawing.

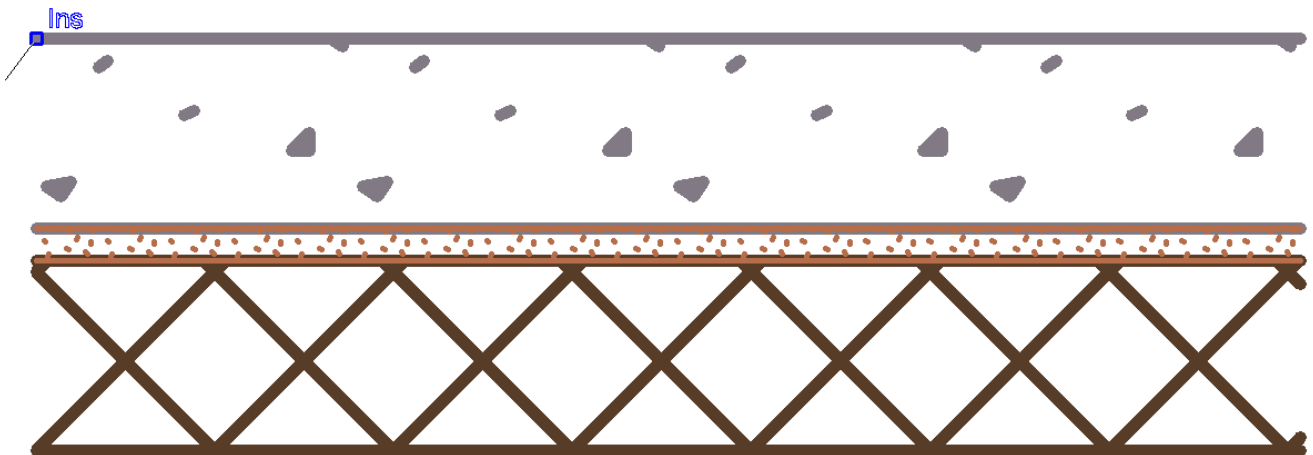
One of the last things we need to do to complete the symbol is set the Insertion Origin. On the new plan that we have pasted the symbol into click **Modify > Build Symbol**.



The **Instruction Window** will instruct you to SET SYMBOL ORIGIN.



Same as before click on the top left corner of the symbol.



Now we need to save the **.pxd** file somewhere safe. The best place to save our new symbol is in the same folder as the existing PlansXpress® symbols.

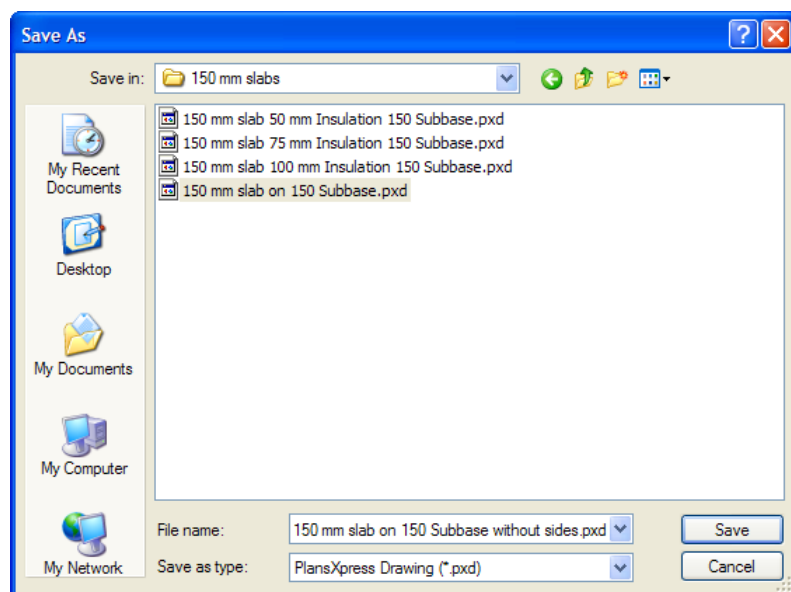
In Windows XP you will find the 150 mm slabs symbols in this location.

*C:\Documents and Settings\All Users\Application  
Data\HBXL\PlansXpress2\Symbols\Sections\Assembled Slabs\150 mm slabs\*

In Vista or Windows 7 you will find the 150 mm slabs symbols in this folder.

*C:\Programdata\HBXL\PlansXpress2\Symbols\Sections\Assembled Slabs\150 mm slabs\*

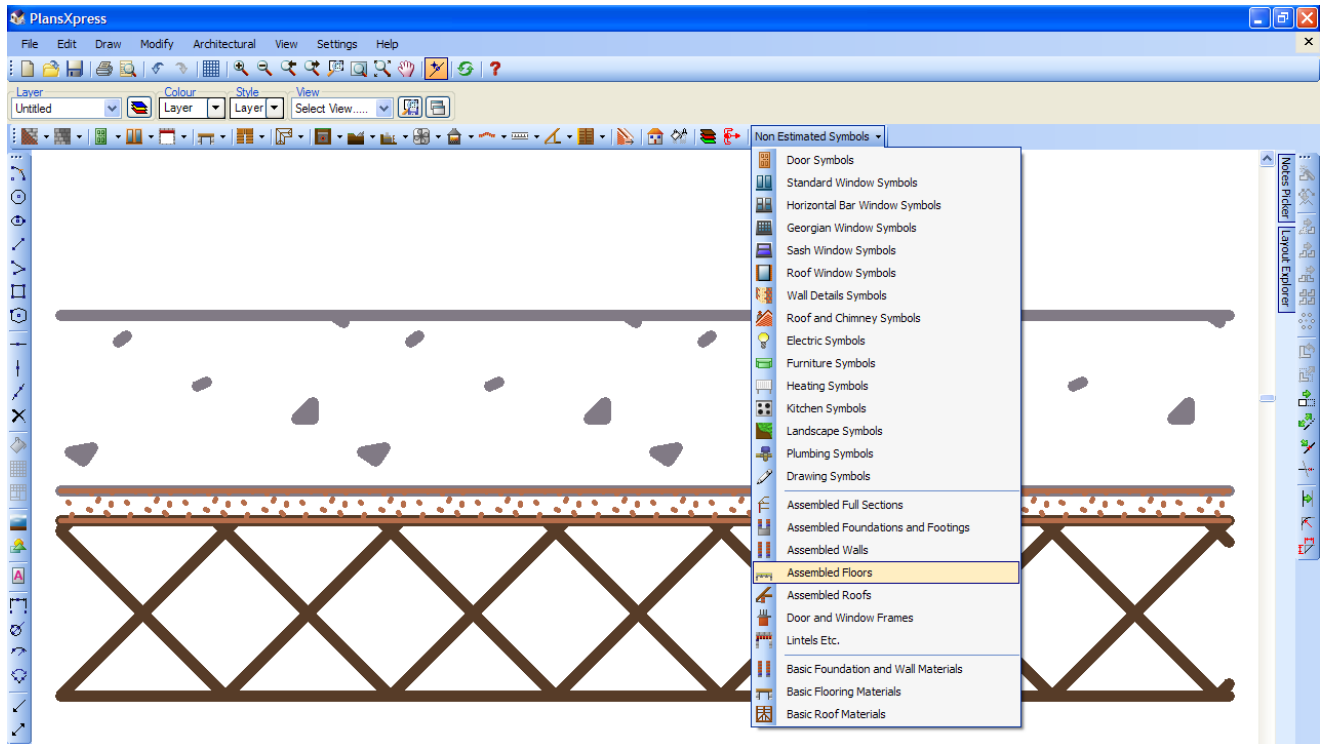
You will see as you navigate to the folder that all the other Non-Estimated Symbols can be found in the Symbols folder and the section symbols within the Sections folder.



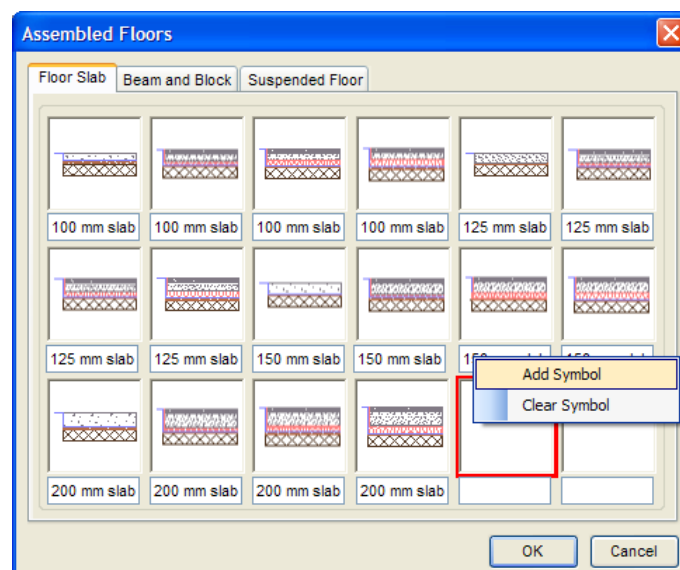
Within the **Save As** dialog box navigate to the appropriate folder and give the file name as '*150 mm slab on 150 Subbase without sides.pxd*' and click **Save**.

The last thing we need to do is add our new symbol to the library of Non-Estimated Symbols so we can easily insert it into our plans.

Click on **Non-Estimated Symbols** and go into **Assembled Floors**.

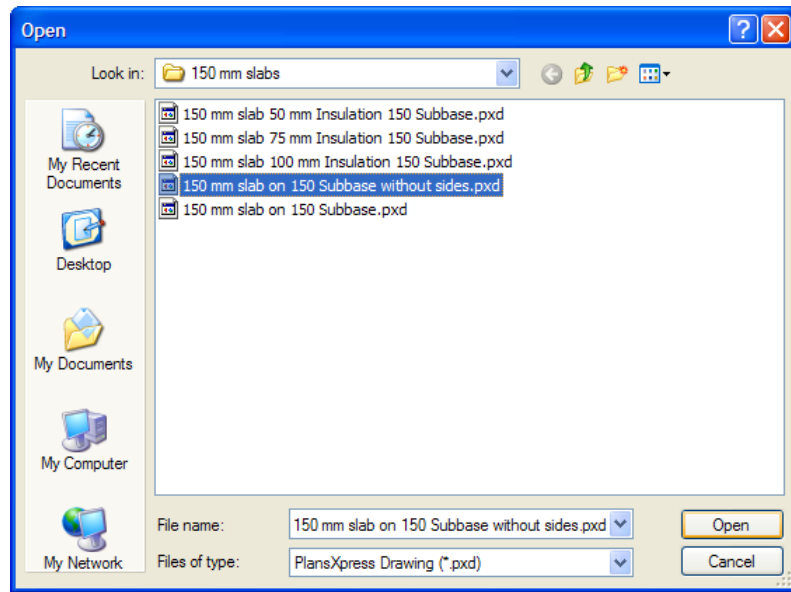


Right-click on an empty slot and then click **Add Symbol**.



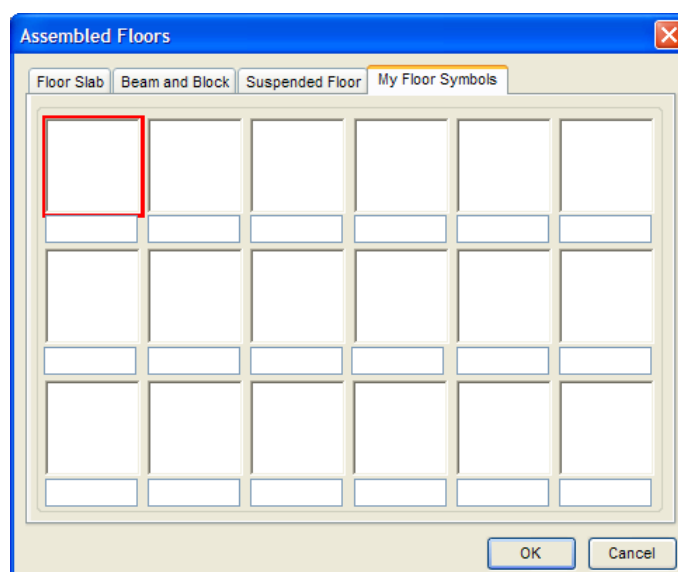
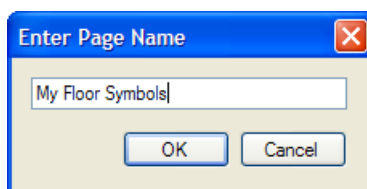
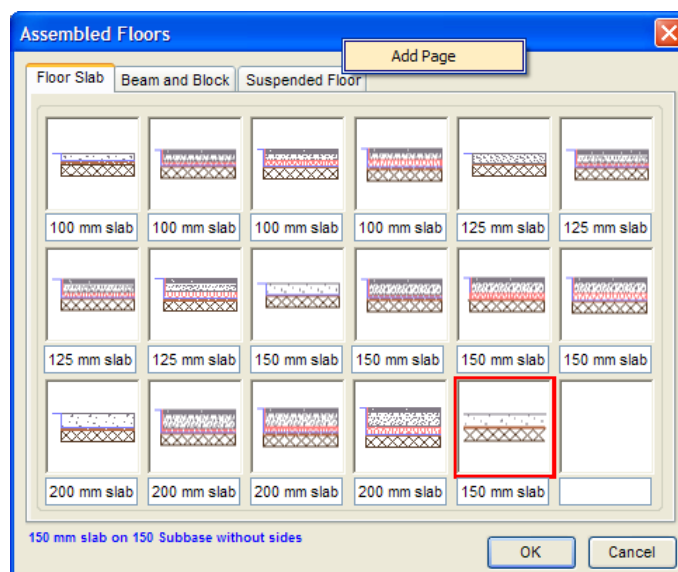


You should find PlansXpress® defaults to the last folder we were in but if not you will need to navigate to the folder we stored our .pxd file in. Select the file and click **Open**.



As you can see the symbol we have modified and saved is now an option to be selected from the Non-Estimated Symbols.

One final tip that may come in handy if you find yourself adding your own symbols: If you right click on a page title you are able to add another page.



As you can see above, after entering a page name a tab will appear in the symbol library for you to add in lots of new symbols. This might be useful in keeping track of which symbols you have created yourself.

---

**Got a question? Call 0845 1234 085 to contact the HBXL Support Team.**